



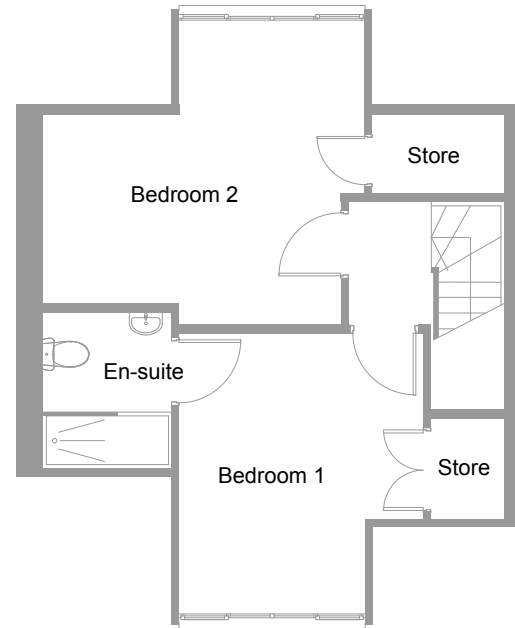
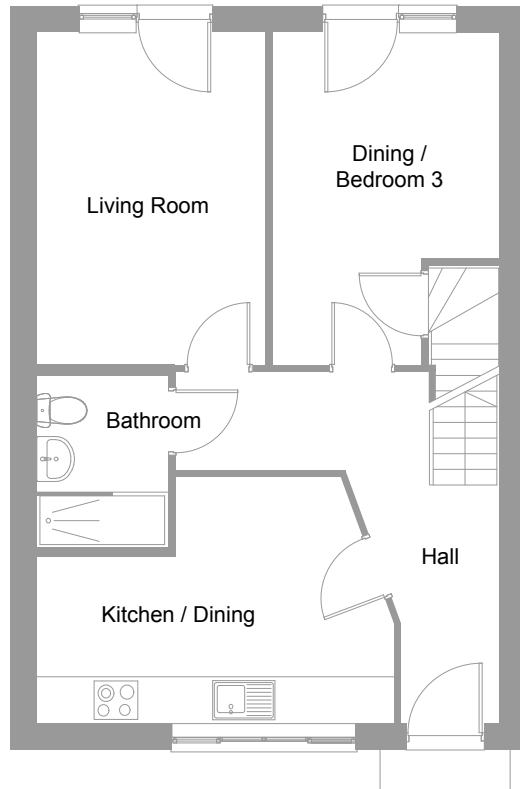
The Maple
Two Bedroom
Bungalow



Carrington
| GARDENS

The Maple Two/three Bedroom Bungalow

Carrington
| GARDENS



Floor Dimensions

Living Room	3038 x 4430mm	9' 11" x 14' 6"
Kitchen	4748 x 3294mm	15' 6" x 10' 9"
Bedroom 1 (en suite)	3257 x 3751mm	10' 8" x 12' 3"
Bedroom 2	4307 x 4077mm	14' 1" x 13' 4"
Bedroom 3 / Dining (GF)	3015 x 4430mm	9' 10" x 14' 6"
94.88m ² (1020ft ²)		



Carrington Gardens, Humberston Avenue,
Humberston, DN36 4SY
keystonedevolutions.co.uk

This information is intended for illustration purposes only and may be subject to change for reasons beyond our control. Each property shown may not include the features as described in the illustration or specification and the floor plans are not to scale. Dimensions supplied are accurate to within +/- 100mm (+/- 4") they are not intended to be used for carpet sizes, appliance spaces or items of furniture spaces. As a consequence this information should be used for guidance only and cannot be relied on to accurately describe any Specified Matters as prescribed by an Order made under the Property Misdescriptions Act 1991, nor constitute a contract, part thereof or warranty. Computer Generated Image shows Plot 224. Please note plot specific materials may vary, please check with the Sales Executive. 394706-APR19