



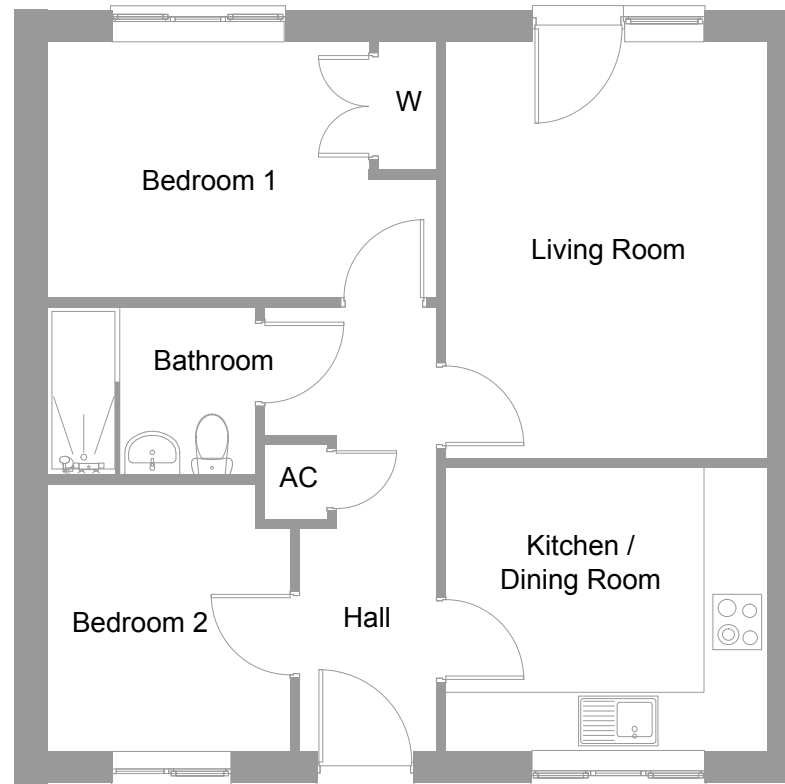
The Holly
Two Bedroom
Bungalow



Carrington
| GARDENS

The Holly Two Bedroom Bungalow

Carrington | GARDENS



Floor Dimensions

Living Room	3302 x 4358mm	10' 10" x 14' 5"
Kitchen	3302 x 2967mm	10' 10" x 9' 8"
Bedroom 1	4061 x 2685mm	13' 8" x 8' 9"
Bedroom 2	2521 x 2788mm	8' 3" x 9' 1"
55.54m ² (599ft ²)		



Carrington Gardens, Humberston Avenue,
Humberston, DN36 4SY
keystonedevolutions.co.uk

This information is intended for illustration purposes only and may be subject to change for reasons beyond our control. Each property shown may not include the features as described in the illustration or specification and the floor plans are not to scale. Dimensions supplied are accurate to within +/- 100mm (+/- 4") they are not intended to be used for carpet sizes, appliance spaces or items of furniture spaces. As a consequence this information should be used for guidance only and cannot be relied on to accurately describe any Specified Matters as prescribed by an Order made under the Property Misdescriptions Act 1991, nor constitute a contract, part thereof or warranty. Computer Generated Image shows Plot 252. Please note plot specific materials may vary, please check with the Sales Executive. 394706-APR19